

MUSSO GRAND

Accessories



MUSSO GRAND

KGMMOBILITY

DECK TOP



09AP038D23 + Color code
MUSO GRAND DECK TOP ASSY-**DELUX FULL**



09AP03885A + Color code
MUSO GRAND DECK TOP ASSY-**GRAND HALF**

DECK TOP



09AP03886A + Color code
MUSO GRAND DECK TOP ASSY-**NOBLE**



09AP038D33 + Color code
MUSO GRAND DECK TOP ASSY-**PREMIUM COUPE**

DECK TOP



09AP03889A + Color code

MUSSO GRAND DECK TOP ASSY-HIGH TOP

SLIDING BED



09APA38540

BED ASSY-DECK SLIDING (LONG DECK)

- *Available color: Black*
- *Specification*

Width	Length	Height	Net weight	Material	Max. Loading
1,130 mm	1,620 mm	198 mm	67 Kg	Steel	400 Kg

SIDE STEP



09AP038032 STEP ASSY-SIDE-LH

09AP038034 STEP ASSY-SIDE-RH

- *Fixed type with optimal design*
- *Patterned board preventing slip & impact*
- *Net weight : 17.6 kg*
- *Size (L x W x H) : 2,106 x 202 x 246 mm*

KBA certified : German homologation

SIDE STEP



09AP038043 OFF ROAD STEP ASSY-SIDE-LH
09AP038044 OFF ROAD STEP ASSY-SIDE-RH

- *Fixed type with optimal design*
- *Patterned board preventing slip & impact*
- *Net weight : 13.4 kg*
- *Size (L x W x H) : 2,105 x 200 x 100 mm*

DOOR GARNISH



09AP0386DS

DOOR GARNISH SET_Q215 & 250

[FRT & RR LH/RH ALL Included]

09AP0386DS	SET [FRT & RR LH/RH]
09AP0386D1	DOOR GARNISH-FRT LH
09AP0386D2	DOOR GARNISH-FRT RH
09AP0386D3	DOOR GARNISH-RR LH
09AP0386D4	DOOR GARNISH-RR RH

TAIL GATE GARNISH



09AP0388LS TAIL GATE GARNISH_LONG DECK

Before installation



REAR SKID PLATE



09AP038200 PLATE ASSY-RR SKID

- *Available color: Silver*

FENDER FLARE

FENDER FLARE FRONT & REAR



- Qualified Plastic Fender Flare for Musso and Musso Grand
- Note: On front fender 'REXTON' engraved



09AP138S20 FENDER FLARE[SET] – LONG DECK

- Vehicle sign off date: Jan 3, 2019 ~ Aug 26, 2019

09AP138S40 FENDER FLARE[SET] – 19M/Y(UREA) LONG DECK

- Vehicle sign off date: Aug 26, 2019 ~ (For Q200 only)

★Fender design change★

From 2018/10/03 to 2019/08/26 P/N 09AP138S00, 09AP138S20 (oil cap: circle type)

After 2019/08/26 – for Q200 P/N 09AP138S30, 09AP138S40 (oil cap: square type)

ALLOY PEDAL



09APA36040

PEDAL ASSY-ALLOY (SPORTS)

- *Material: Stainless steel*
- *LHD vehicle only*
- *Available color: Silver*

REAR SEAT UNDER TRAY



09APA38118

REAR SEAT UNDER TRAY

UNDER COVER



09AP038046E UNDER COVER

- *Under body protection from off-road*
- *Vehicle dress-up effect*
- *Material : SS41, Thickness : 3T*
- *Size (L x W x H) : 938 x 806 x 109 mm*
- *Net weight : 10kg*

NEW

UREA TANK COVER



09AP03810AE

COVER ASSY-UREA TANK

- *Material: Steel*

REAR STEP



09AP03809L STEP ASSY-RR BUMPER L/DECK

- *Convenient step to deck with simple folding & unfolding*

DECK COVER ASSY-FLAT



09APA38175 DECK COVER ASSY-FLAT LONG

MESH MAT



- *3D Mesh mat*
- *Mounting on 1st & 2nd row*
- *Material: Polyester & nylon*
- *Easy cleaning*
- *Strong durability with polyester & nylon*



09APA38M30 SERVICE MAT ASSY-MESH

3D MAT



09APA38M00 3D CAR MAT-CAB IN



- *Application of TPV material harmless to human body*
- *Non-slip safety function*
- *Easy to detach and wash/dry*

MULTI UTILITY BOX



09AP038B10

MULTI UTILITY BOX

- Available color: Black
- Decktop, Roll-bar, Sliding bed cannot be installed together

Width	Length	Height	Net weight
1,540 mm	580 mm	560 mm	25 Kg

DECAL FILM



09AP038051

DECAL-4X4 DINAMIC [SET]

- LH & RH 1 SET

WHEEL ARCH GARNISH(SET)



09AP0387LS WHEEL ARCH GARNISH(SET)_LONG DECK_Q215 & 250

BLOW MANAGER-AIR CONDITIONER

09APA3AB00 BLOW MANAGER-AIR CONDITIONER



- *Air conditioner moisture dryer*
- *When operation is stopped, mold formation & odor will be reduced automatically removing moisture from air conditioner*
- *Voltage ; DC 12V,*
- *Overheating, Overdischarging, overcurrent prevention function*
- *Size ; 81.6 x 108.5 x 33.3 mm*



AIR PURIFIER

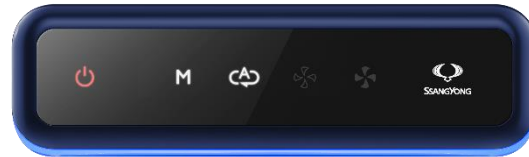
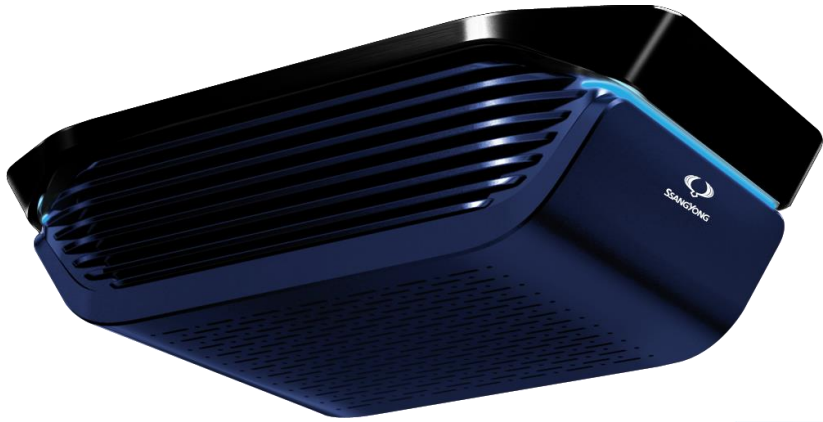


09APA38AP0 AIR PURIFIER-ARMREST (MOQ 5 pcs)

09AP036AF0 FILTER-AIR PURIFIER-ARMREST(MOQ 20 pcs)

- Indoor air purification and odor deodorization
- 4-layer H13 HEPA filter applied and real-time air quality check
- Ultra-fine dust removal rate of 2.5 microns or less 99.85% per hour
- Formaldehyde removal rate 99.45% per hour
- Filter replacement cycle : 500 ~ 520 Hours
- 4-level air volume control function & low noise design

AIR PURIFIER



09APA3AHP0 AIR PURIFIER-HEADLING

09AP03AHF0 FILTER-AIR PURIFIER-HEADLING

- *Applicable to all models*
- *Indoor air purification and odor deodorization*
- *5-layer H13 HEPA filter applied*
- *Indoor air purification for 10 minutes*
- *Low noise (30-45dB)*
- *In-vehicle air quality LED can be checked (4 levels)*

DOOR SPOT LAMP



09APA38300 LAMP ASSY-DOOR SPOT [SET]



- LED logo **Rexton Sports**
- Obstacle check function on floor before getting in the car
- Vehicle dress-up effect
- Wiring & connector for door spot lamp(x2) includes

LED DOOR SCUFF LAMP



09AP038660 TRIM ASSY-FRT LED DOOR SCUFF [SET]

- *Battery replacement type, no wiring work required*
- *Interior items with white lighting made of stainless steel*
- *Battery(CR2430) replacement cycle ; 2 years*



3D DECK MAT



09AP038M20 3D DECK MAT-LONG DECK

- *Application of TPV material harmless to human body*
- *Non-slip safety function*
- *Easy to detach and wash/dry*

ROLL BAR

WILD & WILD laser cut



09AP038520EXP ROLL BAR-MODERN (Long Body)

Width	Length	Height	Net weight
1,736mm	1,630mm	550mm	30Kg

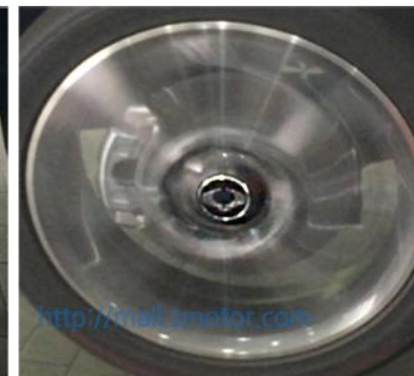
- Available color: Black
- Pipe Material : SS41 (Thickness 2T / 60.5ø)
- Others Material : SUS (Bracket, Panel)
- "Wild & Wild" Laser Cut

SPINNING WHEEL CAP



09AP034H00B SPINNING WHEEL CAP (SET_4PCS)

09AP034H00 SPINNING WHEEL CAP (1 PCE)



ITEM LIST

No	GROUP	PART NO	PART NAME	REMARK
1	MUSO GRAND DECK TOP (with color code)	09AP038D23	DECK TOP ASSY-DELUX FULL	With color code
		09AP03885A	DECK TOP ASSY-GRAND HALF	With color code
		09AP03886A	DECK TOP ASSY-NOBLE	With color code
		09AP038D33	DECK TOP ASSY-COUPE	With color code
		09AP03889A	DECK TOP ASSY-HIGH	
2	SLIDING BED	09APA38540	BED ASSY-DECK SLIDING	
3	SIDE STEP	09AP038032	STEP ASSY-SIDE-LH	KBA certified : German homologation
		09AP038034	STEP ASSY-SIDE-RH	
		09AP038043	OFF ROAD STEP ASSY-SIDE-LH	
		09AP038044	OFF ROAD STEP ASSY-SIDE-RH	
4	GARNISH	09AP0386DS	DOOR GARNISH SET [FRT & RH LH/RH]	
		09AP0388LS	TAIL GATE GARNISH-LONG DECK	
5	REAR	09AP038200	PLATE ASSY-RR SKID	

No	GROUP	PART NO	PART NAME	REMARK
6	FENDER FLARE	09AP138S20	FENDER FLARE[SET]-LONG DECK	Vehicle sign off date: Jan 3, 2019 ~ Aug 26, 2019
		09AP138S40	FENDER FLARE[SET]-19M/Y(UREA) LONG DECK	Vehicle sign off date: Aug 26, 2019~for Q200
7	INTERIOR	09APA36040	PEDAL ASSY-ALLOY (SPORTS)	LHD vehicle only
		09APA38118	REAR SEAT UNDER TRAY	
		09APA38M00	3D CAR MAT-CAB IN	
8	ELECTRICAL	09APA3AB00	AFTER BLOW-AIR CONDITIONER	
		09APA38AP0	AIR PURIFIER_ARMREST	
		09AP036AF0	FILTER-AIR PURIFIER_ARMREST	
		09APA3AHP0	AIR PURIFIER_HEADLINING	
		09AP03AHF0	FILTER-AIR PURIFIER_HEADLINING	
9	EXTERIOR	09APA38M20	3D DECK MAT (LONG DECK)	
		09AP038520EXP	ROLL BAR-LONG BODY MODERN	
		09AP038046E	UNDER-COVER	
		09AP03810AE	COVER ASSY-UREA TANK	
		09AP034H00	SPINNING WHEEL CAP	

No	GROUP	PART NO	PART NAME	REMARK
10	STORAGE	09AP038B10	MULTI UTILITY BOX	
11	DECAL FILM	09AP038051	DECAL-4X4 DINAMIC [SET]	
12	REAR STEP	09AP03809L	STEP ASSY-RR BUMPER L/DECK	
13	EXTERIOR	09APA38175	DECK COVER ASSY-FLAT LONG	
14	INTERIOR	09APA38M30	SERVICE MAT ASSY-MESH	
15	GARNISH	09AP0387LS	WHEEL ARCH GARNISH(SET) _LONG DECK_Q215 & 250	